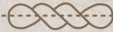


TOWN CREEK

apartment homes





Exceptional Amenities

CLUBHOUSE
JACUZZI
CLOTHES CARE CENTER
COVERED PARKING
2 SPARKLING POOLS
COPPELL ISD

24-HOUR FITNESS CENTER
WASHER/DRYER IN UNIT*
FIREPLACES*
SUNROOMS*
VAULTED CEILINGS*
EXTERIOR STORAGE ROOMS

*IN SELECT UNITS

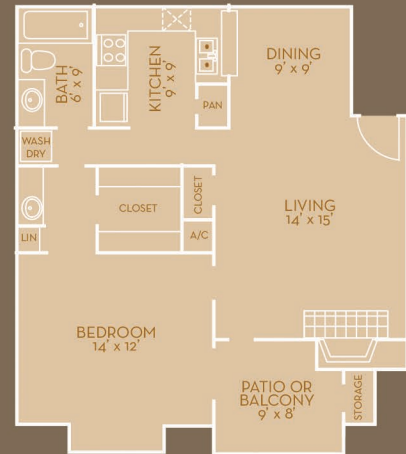


FLOORPLANS



A1
600 sq. ft.

A2
687 sq. ft.



A3
730 sq. ft.

A4
818 sq. ft.



B1
935 sq. ft.

B2
1018 sq. ft.



B3
1001 sq. ft.

B4
1102 sq. ft.









DIRECTIONS:
FROM I-35: EXIT SANDY LAKE ROAD. PROCEED WEST
TO NORTH MOORE ROAD. TURN NORTH AND TOWN CREEK WILL BE ON THE LEFT.

TOWN CREEK

apartment homes

190 NORTH MOORE | COPPELL, TEXAS 75019
TEL 972-471-0003 | FAX 972-393-2894

WWW.TOWN-CREEK.COM



Town Creek Apartment Homes is committed to promoting equal opportunity housing as outlined under both the Texas Fair Housing Act and the Federal Fair Housing Act. Town Creek Apartment Homes does not discriminate in renting or in providing services based on age, race, color, sex, religion, national origin, disability, or familial status.

