



NC - 2019



GRANITE MILL EST. 1844

Haw River, North Carolina

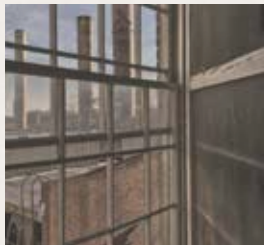
*Modern Historic Living*

CONE FABRIC EST. 1944

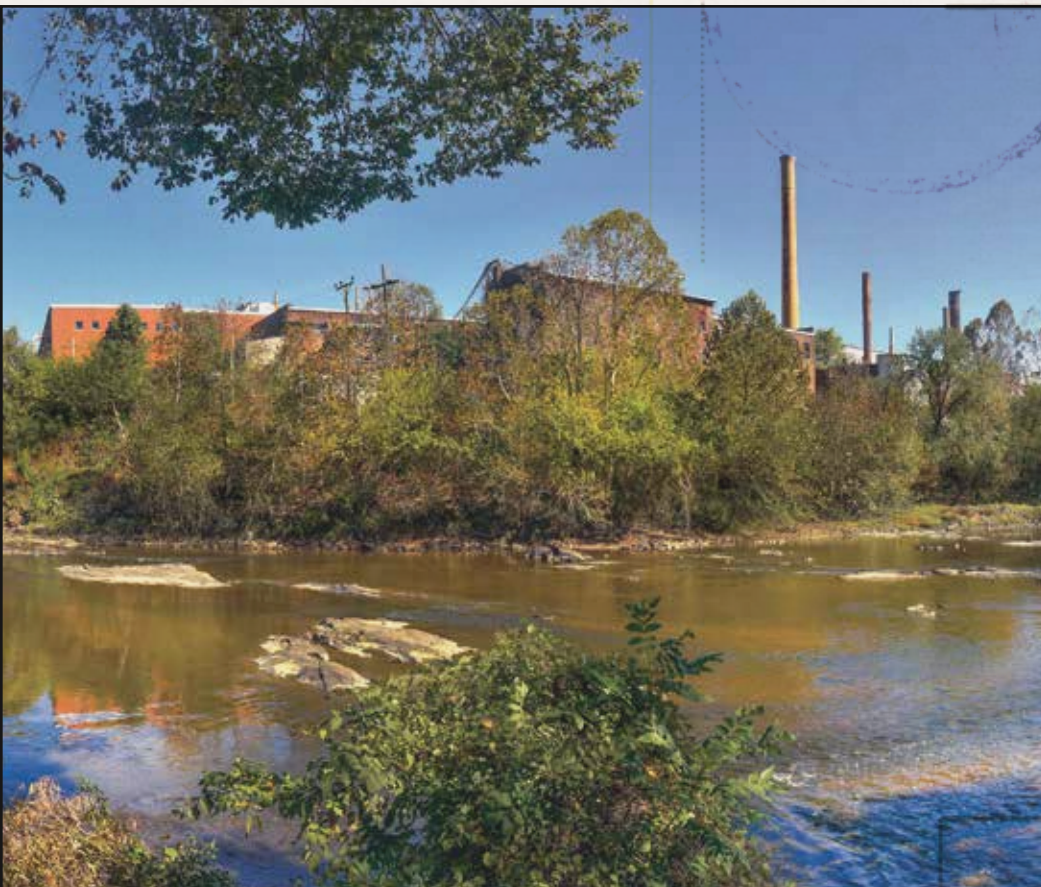


# Life with Historic Character

- A UNIQUE RIVER LIFESTYLE







## A LIVING HISTORY

With a history of craftsmanship and innovation comes a new vision. Textiles, corduroy, and machines of yesterday are replaced with loft, studio, one, two, and three bedroom modern residences where community can be nurtured.

Lofts on Haw River will embrace the history of the original 1844 Granite Mill site, and create a legacy all its own. Modern comforts and conveniences with a backdrop of historic character. Residents will enjoy the luxuries of social apartment living, direct river views, convenience to Highway I-85 and I-40, and nearby access to the NC Mountains-to-Sea Trail.

**Modern Historic Living on the Haw.**



# History meets Modern

- CREATE A LEGACY ALL YOUR OWN



## RESIDENCES

- **Unique Studio, One, Two and Three Bedroom Apartments**
- **Open-Concept Lofted Floorplans\***
- **Expansive 10-18 Foot Ceilings**
- **Hard Wood or Concrete Flooring Throughout**
- Granite or Quartz Countertops
- Sleek Stainless Steel Kitchen Appliances
- Kitchen Pantries
- Relaxing Garden Soaking Tubs
- Separate Shower
- Spacious Closets
- Built-In Desk\*
- **USB Ports in Each Bedroom and Kitchen**
- Washer and Dryer Included
- Private Patio or Balcony\*
- Additional Onsite Storage
- **Community-Wide Wi-Fi, Fiber to each Unit**

*\* In select units.*

## COMMUNITY

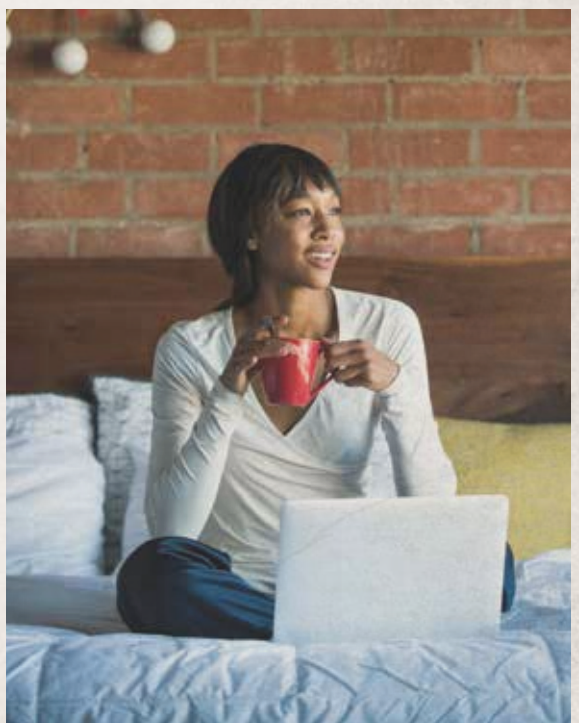
- Modern Clubhouse with Kitchen and Coffee Bar
- **Co-Working Business Space with Private Suites**
- 3,000 Square Foot Interactive Fitness Center with Private Yoga Studio and Aerobic Center
- Relaxing Indoor and Outdoor Courtyards
- **Rooftop Patio Decks**
- Vibrant Swimming Pool
- Barbecue Area with Grills and Fire Pit
- Gaming Lawn
- Convenient Jogging Trails
- **Close Access to the NC Mountains-to-Sea Trail**
- **Easy River Access**
- **Bike and Kayak Storage Areas**
- Pet Trail and Washing Station
- **Automated Package Lockers**
- Controlled Building and Elevator Access
- Convenient Access to Interstate I-85 and I-40
- **DC Fast EV Charging Stations**
- 24-Hour Emergency Maintenance
- Professionally Landscaped Grounds

*\* Features and amenities are subject to change.*





**ONE-OF-A-KIND LIFE ON THE RIVER.** Revitalized historic buildings breathing with new life and purpose. Brick and mortar of days past now serve as backdrops for your favorite painting or personal decor. It is truly like no other in every aspect. Purposeful buildings of the Industrial Revolution now serve the lifestyles of unique, eclectic, historic and modern.







GRANITE MILL EST. 1844

Haw River, North Carolina

*Lofts on Haw River*

LOFTS ON HAW RIVER EST. 2019



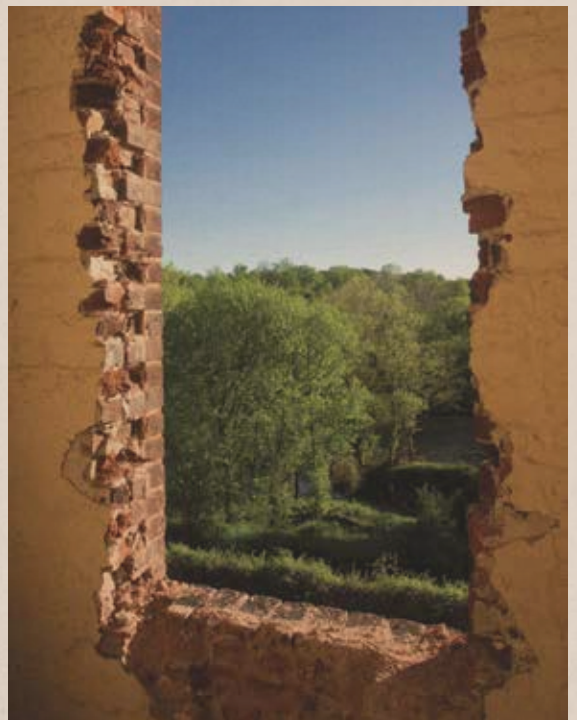
This plan is an artist's rendering for illustrative purposes only and may not be to scale. All dimensions and distances are approximate. Actual product and specifications may vary in dimension or detail. Please see a representative for details.



# - HISTORY RELIVED -



- |   |  |  |  |   |
|---|--|--|--|---|
|  COMMUNITY ROOM      |  CO-WORK  |  CHARCOAL GRILL |  FITNESS    |  KAYAK STORAGE |
|  RIVER OVERLOOK      |  PET WASH |  YOGA STUDIO    |  LEASING    |  NATURE TRAIL  |
|  ROOFED COURTYARD    |  FIRE PIT |  CLUBHOUSE      |  GAS GRILL  |  POOL          |
|  EV CHARGING STATION |  MAIL     |  BIKE STORAGE   |  RESTAURANT |   |







**CALL IT "HOME ON THE RIVER".** Centrally located between Raleigh and Greensboro, the Lofts on Haw River exemplify living away from it all but close to everything. Secluded but not eluded, bask in the unique nature of history relived. Nearby recreation abounds: disc golf at Red Slide Park, paddling Haw River, relaxing on Graham-Mebane Lake or adventuring out to the NC Mountains-to-Sea Trail. Shopping and entertainment are also just minutes away.







116 E. MAIN ST.  
Haw River  
NC 27258

[phone]  
336.270.8014

*Modern  
Historic Living*

LOFTSONHAWRIVER.COM